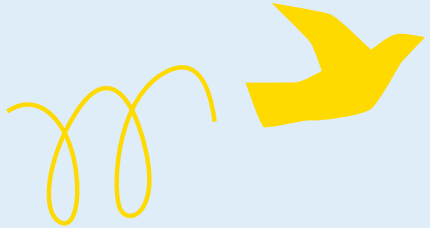


Uniting WA

Strategic Plan 2023 - 2028.

Uniting

2023–2028 Uniting WA Strategic Plan



Our values

Compassionate

We are nurturing, generous and thoughtful with our words and deeds.

Respectful

We act with honesty and integrity, and open our hearts to all people without exception.

Imaginative

We challenge convention, explore new possibilities and dare to dream for a better future.

Bold

We face injustice head on and stand up for what is right and true with confidence and strength.



Our purpose

To inspire people, enliven communities and confront injustice.

Who we support

We support people experiencing complex challenges brought on by intergenerational trauma or situational crisis. This includes people who may be experiencing domestic violence, financial hardship or homelessness, mental illness or disability and people reintegrating into the community. We also support children experiencing vulnerability and families at risk of breakdown.

Anything is possible

Our foundation

Christ invites us to serve humanity by creating an inclusive, connected and just world.



Uniting