



Wyn Carr House

Empowering **women over** **55 facing** **homelessness.**

Unite with us to build an innovative, state-of-the-art space to support women over 55 experiencing, or at risk of homelessness.

Uniting



“As the shortage of affordable housing continues to grow, more women than ever need this critical support.

Wyn Carr House has a legacy of nurturing vulnerable women and with your help, we can deliver a solution that enables women in crisis to get the support they need to transition to a secure, stable home.”

Lisa Fini

Campaign Chair

Non-Executive Director, Uniting WA

A hidden crisis

Women aged 55 and over are the fastest-growing cohort of people experiencing homelessness in Australia and yet, these women are woefully under-represented in terms of services offering the support they need to secure stable, long-term housing.

Mothers, grandmothers, wives, sisters, aunts, neighbours, friends - as affordable housing shortages continue to rise, more women than ever need urgent support.

There are many factors contributing to homelessness of women over 55 such as

- Domestic violence
- Family breakdown
- Economic disadvantage
- Housing stress and instability
- Unexpected crisis
- Workforce participation trends

The critical issue

Women over 55 are the **fastest-growing** cohort of people experiencing homelessness in Australia.

31% increase

in the number of women over 55 experiencing homelessness in Australia from 2011 to 2016.

55% increase

in the number of women aged 55-75 seeking support from Specialist Homelessness Services in the last 10 years.

Two thirds

of single women on the age pension do not have their own home and have less than \$50,000 in assets.



We know how to help people in need

Since 2006 Uniting WA have been addressing the causes of vulnerability and disadvantage, standing up for a just society and supporting individuals and communities to be valued and connected. We have transformed thousands of lives through person-centred services for the most vulnerable West Australians.

People we support

Our services support people experiencing complex challenges brought on by intergenerational trauma or situational crisis.

People who may be:

- Experiencing mental illness, disability, homelessness
- Re-joining community after leaving prison
- At risk of family breakdown
- Children experiencing vulnerability

A hidden crisis exists. The need is urgent.



A state-of-the-art solution

The historical Wyn Carr House was built in 1923 and the building, as well as its namesake, have long been associated with supporting women in need, however it has become unliveable.



PROJECT OVERVIEW



In partnership with Housing All Australians, the WA state government, and generous supporters, we will create a state-of-the-art facility that honours the long legacy of Wyn Carr House, offering purpose-built transitional accommodation and best-practice services for women over 55 who are most at risk. It will offer 12 beds for residents who will be supported by Uniting to build their capacity to independently secure and maintain stable accommodation and develop positive connections within the community over the duration of their stay (up to 12 months).

Transitional Accommodation

We offer services across the various stages of homelessness, from crisis support all the way through to housing re-entry services. Wyn Carr House will play a vital role in our program helping women transition from homelessness to being able to live independently.

Transitioning from Homelessness

01 Assertive Outreach

Outreach workers engage with Perth's rough sleeping community in the early mornings and evenings to build trust and refer individuals to support services.

02 Tranby Engagement Hub

Homelessness Drop in and Support centre where people experiencing homelessness can make contact with the support services sector in an easy to access, safe and secure premises.

03 Koort Boodja

24/7 Supported Transitional Accommodation where individuals feel safe and secure to build trusting relationships with Uniting's case workers to access secure accommodation and support services based on individual needs.

04 Transitional Accommodation

Homelessness Accommodation Support Service (HASS) – Wyn Carr House. Accommodation up to 12 months where individuals can establish positive community connections, positive living habits and secure long term housing.

05 Next Step Housing

Various sites are under feasibility assessments. Long Term housing with light touch supports promoting and facilitating increased independence.

Trauma-Informed Design

The contemporary design by Cox Architects considers the elements vital to promoting healing, improving physical and mental health, and the overall wellbeing of individuals and their communities. To achieve this, the design delivers safe, private, dignified, accessible spaces which contribute to create a sense of home that will positively impact the lives of those who utilise it, now and into the future.

With an ambitious plan to have the refurbishment and contemporary new green build completed by 2023, Uniting is seeking support to help us close the funding gap to ensure Wyn Carr House becomes a reality.

Lower level

Safety

Increasing the real & perceived sense of safety without creating a prison-like atmosphere.

Dignity

Providing beautiful, healthy natural spaces to enable development of a sense of self-worth, self-esteem and self-confidence.

Sustainability

Providing well-designed spaces that respond positively to environmental conditions in order to maintain comfort and increase the sense of wellbeing for users.

Accessibility

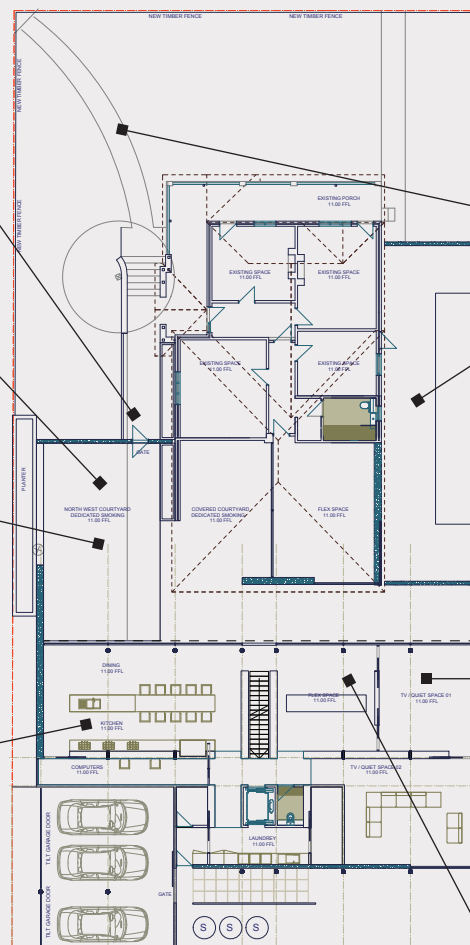
Ensuring the facility provides equal access to a diverse range of physical, cultural, social and spiritual needs and promotes dignity and respect.

Sense of Home

Creating a sense of home or place by providing both private and social spaces in the garden for quiet relaxation as well as a welcoming entry to generate a positive sense of belonging.

Therapeutic Spaces

Creating welcoming space that promotes safety and privacy, without impeding staff supervision.



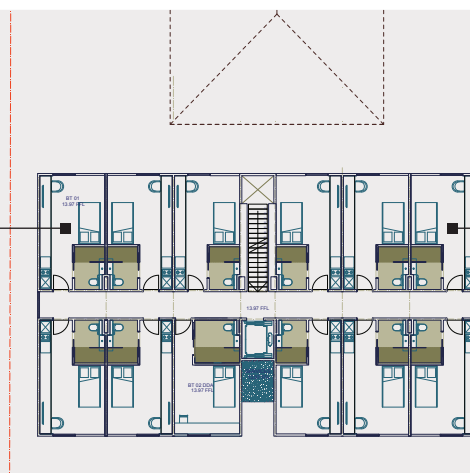
Upper level

Privacy

Providing a range of private areas, both real and perceived, of differing scales within the property without creating a sense of isolation or entrapment.

Flexibility

Providing living arrangements that can be simply altered to suit women from diverse backgrounds without compromising comfort or sense of dignity.



Be part of the solution

\$1.5 million is needed from supporters to make the reimagined Wyn Carr House a reality, and **\$150,000** is needed **each year** to support residents transitioning to independence.

For individuals, trusts and foundations, this is an opportunity to reach out and support vulnerable women over 55 from your community who find themselves with no home, or at risk of being homeless.

You can join those in the philanthropic and business community who are willing and able to offer generous gifts and use their personal influence to attract key contribution.



DONATE



Donations are tax deductible.

Your gift **will make an impact** and **inspire others** to contribute to community in a measurable way.

Learn more about the needs facing the women we support and **contribute to empowering them** in stable independent housing.

Discover the details behind the **award winning design** and green architectural elements of the new building.

Uniting will honor your gift as part of our personalised stewardship program.

Become part of the **Uniting family** of supporters.



Lisa Fini
Campaign Chair

Uniting WA
Non-Executive Director
P: 0417 951 720
E: lisafini@iinet.net.au

Troy Morse
Project Lead

Uniting WA
Principal Practice Lead
– Strategic Asset Management
P: (08) 9355 9079
E: troy.morse@unitingwa.org.au

Tanya Hundloe
Campaign Director

P: 0419 720 232
E: tanyah@socialmoney.com.au

**For more information
head to**

unitingwa.org.au